



NEET MODEL QUESTIONS

SET-4

Subject : **PHYSICS**

- In an Isochoric process, if $T_1 = 27^\circ\text{C}$ and $T_2 = 127^\circ\text{C}$ then P_1/P_2 will be equal to
 (1) $9/59$ (2) $2/3$
 (3) $3/4$ (4) None of these
- A difference of 2.3 eV separates two energy levels in an atom. What is the frequency of radiation emitted when the atom makes a transition from the upper level to the lower level?
 (1) $6.95 \times 10^{14}\text{ Hz}$ (2) $3.68 \times 10^{15}\text{ Hz}$
 (3) $5.6 \times 10^{14}\text{ Hz}$ (4) $9.11 \times 10^{15}\text{ Hz}$
- A metal conductor of length 1 m rotates vertically about one of its ends at angular velocity 5 radians/s . If the horizontal component of earth's magnetic field is $0.2 \times 10^{-4}\text{ T}$, then the emf developed between the two ends of the conductor is
 (1) 5 mV (2) $50\text{ }\mu\text{V}$ (3) $5\text{ }\mu\text{V}$ (4) 50 mV

Subject : **CHEMISTRY**

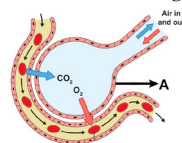
- $\text{CH}_3\text{CH}_2\text{CH}_2\text{COOCH}_2\text{CH}_3 \xrightleftharpoons{\text{NaOH}} \text{A} \xrightarrow{\text{H}_3\text{O}^+} \text{B}$
 (1) $\text{A} = \text{CH}_3\text{CH}_2\text{CH}_2\text{C}(=\text{O})\text{OH}$; $\text{B} = \text{CH}_3\text{CH}_2\text{CH}_2\text{C}(=\text{O})\text{H}$
 (2) $\text{A} = \text{CH}_3\text{CH}_2\text{CH}_2\text{C}(=\text{O})\text{O}^-\text{Na}^+$; $\text{B} = \text{CH}_3\text{CH}_2\text{CH}_2\text{C}(=\text{O})\text{H}$
 (3) $\text{A} = \text{CH}_3\text{CH}_2\text{CH}_2\text{C}(=\text{O})\text{O}^-\text{Na}^+$; $\text{B} = \text{CH}_3\text{CH}_2\text{CH}_2\text{C}(=\text{O})\text{OH}$
 (4) None of these
- Among these, which one is used to manufacture lacquers?
 (1) Urea-formaldehyde Resin (2) Bakelite
 (3) Glyptal (4) Polystyrene
- The maximum Lead content in drinking water is,
 (1) $<500\text{ ppb}$ (2) 50 ppb
 (3) 50 ppm (4) 2 ppb

Subject : **BOTANY**

- In the process of producing recombinant insulin, Chain-A & Chain-B were joined by which of the following bonds?
 (1) Hydrogen bond (2) Vander walls force
 (3) Carbon bond (4) Disulphide bond
- Which of the following has resistance to Bacterial blight disease?
 (1) Pusa sadabahar (2) Pusa swarnim
 (3) Pusa komal (4) Pusa snowball
- Statement-1: Apomixis is process of development of seed by fertilization.
 Statement-2: Apomixis is seen in Asteraceae, Poaceae.
 (1) 1 and 2 correct.
 (2) 1 and 2 incorrect.
 (3) 1 is correct and 2 is incorrect.
 (4) 1 is incorrect and 2 is correct.

Subject : **ZOOLOGY**

- Select the incorrect statement regarding Synapses.
 (1) In electrical synapses membranes of the pre and post-synaptic neurons are separated by a fluid-filled space called synaptic cleft.
 (2) In electrical synapses, the membranes of pre and post-synaptic neurons are in very close proximity.
 (3) Chemical synapses use neurotransmitters.
 (4) Impulse transmission across a chemical synapse is slower than across an electrical synapse.
- If a person has heart rate of $74\text{ beats per minute}$ and stroke volume is 70 ml , the approximate cardiac output for the person will be
 (1) 4000 ml (2) 5000 ml
 (3) 6000 ml (4) 7000 ml
- What is A in the given diagram?



- (1) Endothelium
- (2) Basement membrane
- (3) Alveolar epithelium
- (4) Interstitium

Scan the QR code for detailed answers or log on to www.vetriineet.com



Questions Provided by **VETRII NEET GATEWAY**



VETRII NEET GATEWAY

Best Academy for NEET Coaching

(Unit of VETRII IAS STUDY CIRCLE®)

www.vetriineet.com | Ph: 98844 21666 | 98844 32666

Free Mock Tests for Neet UG - 2023 on 22nd & 23rd April 2023

@ all VETRII Centers

CHENNAI | SALEM | KOVAI | MADURAI | TIRUNELVELI | THANJAVUR | KOVILPATTI

ADMISSIONS
OPEN

Avail upto

100%
SCHOLARSHIPS

for NEET UG -2024

Preparation