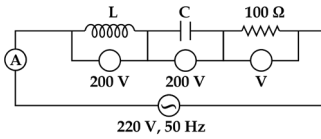


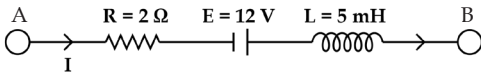


Subject : **PHYSICS**

1. From the following circuit, the readings of Ammeter and Voltmeter will be,



- (1) 2 A, 200 V (2) 2.2 A, 220 V  
(3) 3 A, 200 V (4) 3.3 A, 220 V
2. The Network shown in figure is a part of the circuit. (The battery has negligible resistance)



At a certain instant the current  $I = 2A$  and it is decreasing at the rate of  $10^2 \text{ As}^{-1}$ . Find out the potential difference between the points B and A

- (1) 8.0 V (2) 8.5 V (3) 15 V (4) 20 V
3.  $T_{1/2}$  of a radioactive substance is 60 min. If  $8 \times 10^{10}$  atoms are present at  $t = 0$ , then the number of atoms decayed in the duration  $t = 2$  hour to  $t = 4$  hour will be
- (1)  $2 \times 10^{10}$  (2) Zero (3)  $1.5 \times 10^{10}$  (4) Infinity

Subject : **CHEMISTRY**

4. Iso-structural species are those which have the same shape and same hybridization. Among the given species identify the iso-structural pairs.
- (1)  $\text{NF}_3$  and  $\text{BF}_3$  (2)  $\text{BF}_4^-$  and  $\text{NH}_4^+$   
(3)  $\text{NH}_3$  and  $\text{NO}_3^-$  (4)  $\text{BCl}_3$  and  $\text{BrCl}_3$
5. 600 cc of gas at pressure of 750 mm of Hg is compressed to 500 cc. Taking the temperature remains constant, the increase in pressure is,
- (1) 150 mm of Hg (2) 250 mm of Hg  
(3) 450 mm of Hg (4) 350 mm of Hg
6. The initial volume of a gas cylinder is 750 mL. If the pressure of the gas inside the cylinder changes from 840 to 360 mmHg. Find the final volume?
- (1) 1750 L (2) 1.950 L (3) 1.750 L (4) 1720 L

Subject : **BOTANY**

7. Assertion (A): In dicot leaf, epidermis covers both the upper surface (Adaxial epidermis) and lower surface (Abaxial epidermis).  
Reason (R): The adaxial epidermis bears more stomata than the abaxial epidermis.  
(1) (A) and (R) are true, and (R) is the correct explanation of (A).  
(2) (A) and (R) are true, and (R) is not the correct explanation of (A).  
(3) (A) is true, but (R) is false.  
(4) (A) is false, but (R) is true.
8. An anther has 2000 pollen grains. How many PMCs must have been there to produce them?  
(1) 500 (2) 450 (3) 300 (4) 800
9. At which of the following stage of cell division, the chromosome appears single, thin and thread like?  
(1) Diplotene (2) Leptotene  
(3) Zygotene (4) Pachytene

Subject : **ZOOLOGY**

10. Assertion (A) : Marasmus is found in infants less than 1 year of age.  
Reason (R) : Marasmus is mainly due to low protein intake.  
(1) Both (A) and (R) are correct and (R) is the correct explanation of (A).  
(2) Both (A) and (R) are correct but (R) is not the correct explanation of (A).  
(3) (A) is correct but (R) is not correct.  
(4) (A) is not correct but (R) is correct.
11. The part of Adrenal gland that secretes the hormones of fight and flight is  
(1) Zona glomerulosa (2) Zona fasciculata  
(3) Zona reticularis (4) Adrenal medulla
12. Enzymes catalyzing the following reaction are called as  $\text{S-G} + \text{S}' \rightarrow \text{S} + \text{S}'\text{-G}$   
(1) Oxidoreductases (2) Transferases  
(3) Ligases (4) Isomerase

Scan the QR code for detailed answers or log on to [www.vetriineet.com](http://www.vetriineet.com)



Questions Provided by  
**VETRII NEET GATEWAY**



## VETRII NEET GATEWAY

Best Academy for **NEET Coaching**

(Unit of **VETRII IAS STUDY CIRCLE®**)

[www.vetriineet.com](http://www.vetriineet.com) | Ph: 98844 21666 | 98844 32666

Free Mock Tests for Neet UG - 2023 on 29<sup>th</sup> & 30<sup>th</sup> April 2023  
@ all VETRII Centers

CHENNAI | SALEM | KOVAI | MADURAI | TIRUNELVELI | THANJAVUR | KOVILPATTI

**ADMISSIONS  
OPEN**

Avail upto

**100%  
SCHOLARSHIPS**

for **NEET UG -2024**

Preparation