



Subject : **PHYSICS**

- At what temperature, the root mean square velocity of  $\text{SO}_2$  molecules is the same as that of  $\text{O}_2$  at  $27^\circ\text{C}$ ?  
(1) 27K (2) 300K (3) 327K (4) 600K
- A spring undergoes an extension of 5cm for a load of 50 g. Find its frequency of oscillation if it is set for vertical oscillation with a load of 200 g attached to its bottom.  
(1) 3.2 Hz (2) 5.7 Hz (3) 1.1 Hz (4) 5.4 Hz
- Find the electrical conductivity of an intrinsic Germanium semiconductor rod of 1 m long, 1 mm wide and 1 mm thick at 300 K. For Germanium,  $n_i = 2.5 \times 10^{19} \text{ m}^{-3}$ ,  $\mu_e = 0.39 \text{ m}^2 \text{ V}^{-1} \text{ s}^{-1}$ ,  $\mu_h = 0.19 \text{ m}^2 \text{ V}^{-1} \text{ s}^{-1}$ .  
(1)  $2.32 \Omega^{-1} \text{ m}^{-1}$  (2)  $3.35 \Omega^{-1} \text{ m}^{-1}$   
(3)  $4.92 \Omega^{-1} \text{ m}^{-1}$  (4)  $7.32 \Omega^{-1} \text{ m}^{-1}$

Subject : **CHEMISTRY**

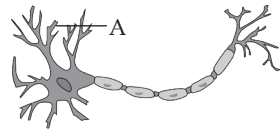
- Which of the following set of elements follow Newland's octave rule?  
(1) C, Si, Ge (2) Be, Mg, Ca  
(3) B, Al, Ga (4) F, Cl, Br
- The correct values of Ionisation enthalpy ( $\text{KJmol}^{-1}$ ) of following elements are C, N, Rb, F  
(1) 403, 1086, 1681, 1402 (2) 1086, 1402, 403, 1681  
(3) 403, 1681, 1402, 1086 (4) 403, 1086, 1402, 1681
- Match the following  
Name IUPAC official name  
(a) Ununoctium (i) Copernicium  
(b) Ununtrium (ii) Oganesson  
(c) Ununbium (iii) Rutherfordium  
(d) Unnilquadium (iv) Nihonium  
(1) (a)-ii, (b)-i, (c)-iii, (d)-iv (2) (a)-iv, (b)-iii, (c)-ii, (d)-i  
(3) (a)-ii, (b)-i, (c)-iv, (d)-iii (4) (a)-ii, (b)-iv, (c)-i, (d)-iii

Subject : **BOTANY**

- Match the Following  
Column I Column II  
(a) Food (i) Chlorella  
(b) Agar (ii) Porphyra  
(c) Single Cell Protein (iii) Gelidium  
(d) Peat moss (iv) Sphagnum  
(1) (a)-ii, (b)-iii, (c)-i, (d)-iv (2) (a)-ii, (b)-iii, (c)-iv, (d)-i  
(3) (a)-iii, (b)-ii, (c)-iv, (d)-i (4) (a)-iii, (b)-ii, (c)-i, (d)-iv
- In Angiosperms, as a result of double fertilization Endosperm is obtained. In which of the following seeds endosperm is absent?  
(1) Coconut (2) Orchids (3) Maize (4) Castor
- Given Floral formula belong to which family?  
 $\oplus \overset{\text{K}}{\text{K}} \overset{\text{C}}{\text{C}} \overset{\text{A}}{\text{A}_3} \overset{\text{G}}{\text{G}_{(2)}}$   
(1) Liliaceae (2) Fabaceae  
(3) Solanaceae (4) Musaceae

Subject : **ZOOLOGY**

- What is A in the given diagram?



- What is A in the given diagram?  
(1) Cell Body (2) Nodes of Ranvier  
(3) Dendrite (4) Schwann Cell
- The ascending sequence of taxonomic hierarchy of Housefly is  
(1) Domestica → Musca → Diptera → Arthropoda  
(2) Arthropoda → Diptera → Musca → Domestica  
(3) Diptera → Musca → Arthropoda → Domestica  
(4) Musca → Domestica → Diptera → Arthropoda
- Match the following  
Epithelium Location  
(a) Squamous (i) Bronchioles  
(b) Cuboidal (ii) Stomach  
(c) Columnar (iii) Renal tubules  
(d) Ciliated (iv) Alveoli  
(1) (a)-iii, (b)-iv, (c)-i, (d)-ii (2) (a)-iv, (b)-iii, (c)-ii, (d)-i  
(3) (a)-iv, (b)-i, (c)-iii, (d)-ii (4) (a)-iii, (b)-iv, (c)-ii, (d)-i

Scan the QR code for detailed answers or log on to [www.vetriineet.com](http://www.vetriineet.com)



Questions Provided by  
**VETRII NEET GATEWAY**



## VETRII NEET GATEWAY

Best Academy for NEET Coaching

(Unit of VETRII IAS STUDY CIRCLE®)

[www.vetriineet.com](http://www.vetriineet.com) | Ph: 98844 21666 | 98844 32666

Free Mock Tests for Neet UG - 2023 on 29<sup>th</sup> & 30<sup>th</sup> April 2023  
@ all VETRII Centers

CHENNAI | SALEM | KOVAI | MADURAI | TIRUNELVELI | THANJAVUR | KOVILPATTI

ADMISSIONS  
OPEN

Avail upto

**100%**  
**SCHOLARSHIPS**

for NEET UG -2024

Preparation