



NEET

MODEL QUESTIONS

DAY-4

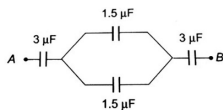
Subject : PHYSICS

1. Find the common potential when capacitor of $20 \mu\text{F}$ is charged to 500 V and another capacitor $10 \mu\text{F}$ charged to 200 V are connected in parallel

- (1) 300 V (2) 500 V (3) 200 V (4) 400 V

2. The capacitance between the points A and B in the given circuit will be

- (1) $3 \mu\text{F}$ (2) $4 \mu\text{F}$
(3) $2 \mu\text{F}$ (4) $1 \mu\text{F}$



3. A parallel plate capacitor has capacitance C_0 . If it is equally filled with parallel layers of materials of dielectric constants K_1 and K_2 its capacity becomes C_1 . The ratio of C_1 to C_0 is

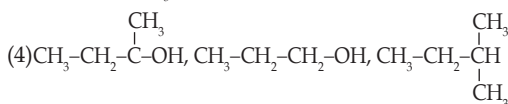
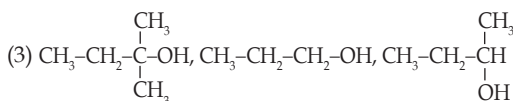
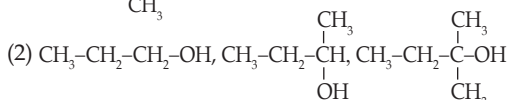
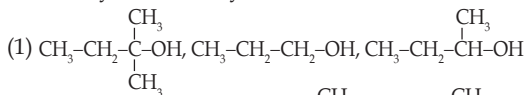
- (1) $K_1 + K_2$ (2) $\frac{K_1 K_2}{K_1 - K_2}$ (3) $\frac{K_1 + K_2}{K_1 K_2}$ (4) $\frac{2K_1 K_2}{K_1 + K_2}$

Subject : CHEMISTRY

4. Among the following complex which shows cis and trans isomerism.

- (1) $[\text{Co}(\text{NH}_3)_4\text{Cl}_2]^+$ (2) $[\text{Co}(\text{NH}_3)_3(\text{NO}_2)_3]$
(3) $[\text{CoCl}_2(\text{en})_2]$ (4) Both 1 & 3

5. Arrange the following alcohols in the order of Primary, Secondary and Tertiary.



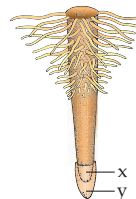
6. Choose the correct option about Chemisorption.

- (1) It is reversible in nature

- (2) It arises because of Vander Waals forces
(3) It depends on surface area
(4) It is not specific in nature

Subject : BOTANY

7. Consider the diagrammatic figure of root and identify the X and Y.



- (1) X-Region of maturation, Y-Region of elongation
(2) X-Region of meristematic activity, Y-Region of elongation.
(3) X-Region of meristematic activity, Y-Root cap.
(4) X-Root cap, Y-Region of maturation.
8. Rough endoplasmic reticulum and smooth endoplasmic reticulum are involved in the synthesis of _____ and _____ respectively.
- (1) Steroids & Lipids (2) Lipids & Proteins
(3) Proteins and Lipids (4) Lipids and Steroids
9. The net gain of ATP molecules during aerobic respiration of one molecule of glucose is
- (1) 32 (2) 34 (3) 36 (4) 38

Subject : ZOOLOGY

10. Approximate volume of CO_2 delivered by 100 ml of deoxygenated blood to alveoli

- (1) 1.2 ml (2) 2.4 ml (3) 3.6 ml (4) 4.8 ml

11. Match the following

- (a) Physalia i. Sea-fan
(b) Adamsia ii. Portuguese man-of-war
(c) Pennatula iii. Sea anemone
(d) Gorgonia iv. Sea-pen

- (1) (a)-ii, (b)-iii, (c)-iv, (d)-i (2) (a)-iii, (b)-i, (c)-ii, (d)-iv
(3) (a)-iv, (b)-ii, (c)-i, (d)-iii (4) (a)-i, (b)-iv, (c)-ii, (d)-iii

12. The type of sex determination seen in *Drosophila* is

- (1) Male heterogamety (2) Male homogamety
(3) Female heterogamety (4) Female homogamety

Questions Provided by
VETRII NEET GATEWAY

Answer Keys:

1	2	3	4	5	6	7	8	9	10	11	12
(4)	(4)	(4)	(4)	(2)	(3)	(3)	(3)	(4)	(2)	(1)	(1)



VETRII NEET GATEWAY

Best Academy for NEET Coaching

(Unit of VETRII IAS STUDY CIRCLE®)

www.vetriineet.com | Ph: 98844 21666 | 98844 32666

Free Mock Tests for Neet UG - 2023 on 22nd & 23rd April 2023
@ all VETRII Centers

CHENNAI | SALEM | KOVAI | MADURAI | TIRUNELVELI | THANJAVUR | KOVILPATTI

ADMISSIONS
OPEN

Avail upto

100%
SCHOLARSHIPS

for NEET UG -2024

Preparation