



Subject : PHYSICS

1. Magnetic field produced at the center of revolving electron in a circular orbit of radius r makes n revolutions per second is.

- (1) $\frac{\mu_0 ne}{2r}$ (2) $\frac{\mu_0 n^2 e}{r}$ (3) $\frac{\mu_0 ne}{2\pi r}$ (4) 0

2. What value of current flowing in the conductor if magnetic field produced 10 cm away from an infinitely long straight conductor is 10^{-5} weber/m².

- (1) 500 A (2) 1000 A (3) 5 A (4) 10 A

3. The magnetic field at the center of circular coil with one turn is B . The magnetic field at the center of same coil with 'n' turns when steady current passing through it.

- (1) 2nB (2) 2n²B (3) n²B (4) nB

Subject : CHEMISTRY

4. If the equilibrium constant for the reaction in the forward direction is $K_e = x$, then equilibrium constant for the reverse reaction is,

- (1) x^2 (2) $-1/x$ (3) $1/x$ (4) $1-x$

5. Oxidation number of chlorine in HClO_4 .

- (1) +3 (2) +2 (3) -3 (4) +7

6. In ice crystals each oxygen atom surrounded by four other oxygen atoms in

- (1) Octahedral (2) Square planar
(3) Tetrahedral (4) Square pyramidal

Subject : BOTANY

7. Consider the following regarding Rhodophyceae and choose the correct statement.

- (1) Rhodophyceae is commonly known as brown algae.
(2) They have chlorophyll a and c as their major pigments.
(3) Flagella is absent in Rhodophyceae.
(4) Their cell wall is made up of cellulose and algin.

Questions Provided by
VETRII NEET GATEWAY

8. Match the following.

- (a) Membrane system of chloroplast i. Photo System-I
(b) Stroma ii. Carbon reactions
(c) Thylakoid iii. Photochemical reactions
(d) Stroma lamellae iv. Synthesis of ATP and NADPH

- (1) (a)-i, (b)-ii, (c)-iii, (d)-iv (2) (a)-iv, (b)-iii, (c)-ii, (d)-i
(3) (a)-i, (b)-iii, (c)-ii, (d)-iv (4) (a)-iv, (b)-ii, (c)-iii, (d)-i

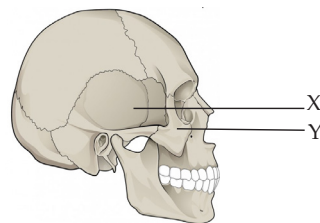
9. Which of the following is a layer of thick-walled parenchymatous cells, that lies next to endodermis?

- (1) Casparian strips (2) Conjunctive tissue
(3) Stele (4) Pericycle

Subject : ZOOLOGY

10. Consider the diagrammatic figure of human skull and choose the X and Y.

- (1) X-Occipital bone and Y-Sphenoid bone.
(2) X-Temporal bone and Y-Sphenoid bone.
(3) X-Occipital bone and Y-Zygomatic bone.
(4) X-Temporal bone and Y-Zygomatic bone.



11. The condition of Erythroblastosis foetalis is characterized by

- (1) Fatty liver (2) Hepatitis
(3) Jaundice (4) Hemochromatosis

12. Statement-1: The P-wave represents the depolarization of the atria.

Statement-2: The T-wave represents the repolarization of the ventricles.

- (1) 1 correct and 2 incorrect.
(2) 1 incorrect and 2 correct.
(3) 1 and 2 are correct.
(4) 1 and 2 are incorrect.

Answer Keys:

1	2	3	4	5	6	7	8	9	10	11	12
(1)	(3)	(3)	(3)	(4)	(3)	(3)	(4)	(4)	(4)	(3)	(3)



VETRII NEET GATEWAY

Best Academy for NEET Coaching

(Unit of VETRII IAS STUDY CIRCLE®)

www.vetriineet.com | Ph: 98844 21666 | 98844 32666

Free Mock Tests for Neet UG - 2023 on 29th & 30th April 2023
@ all VETRII Centers

CHENNAI | SALEM | KOVAI | MADURAI | TIRUNELVELI | THANJAVUR | KOVILPATTI

ADMISSIONS
OPEN

Avail upto

100%
SCHOLARSHIPS

for NEET UG -2024

Preparation